



Diversity Driven 1975-2017

October 11, 2017-January 27, 2018



Three locations:

Glass Lobby Gallery at 728 S. Broad Street

First Floor Temporary Gallery at 730 S. Broad Street

Printed Image Gallery at 730 S. Broad Street



Checklist

(all prices are unframed)

Prints marked NFS are not for sale

Diversity-Driven: 1975-2017

The prints in this exhibition represent a historical overview of the Visiting Artist Series at Brandywine, which began in 1975 with the hosting of prominent Washington, DC painter Sam Gilliam. Gilliam is represented by a few prints that trace his early collaborations (*Wissahickon*) with master screen printer Allan Edmunds, through his work with offset lithography with printer Bob Franklin in the 1980s and 1990s. Gilliam was one of the many exceptional artists to participate in the program multiple times over several decades other artists included Keith Morrison, Moe Brooker, Howardena Pindell, E. J. Montgomery, John T. Scott, Lois M. Johnson, Juan Sanchez and John E. Dowell, Jr.

The exhibit demonstrates the variety of approaches and print media explored during the forty-two-year history of the Visiting Artist Series. These include intaglio, screen printing (a lot of photo screen printing), relief, offset cylinder lithography, flat-bed lithography, embossment, collage, and assemblage. Editions ran as high as 100 to a few excursions into mono-printing with a major project by Hitoshi Nagazato that included 336 images printed as lithographs in an edition of two. Other major projects included Sedrick Huckaby's *99% Project*, which consisted of small editions of 101 images, and Murray Zimiles' *Holocaust Portfolio* of 10 prints and 4 colophon sheets, all printed as lithographs. In addition to printing for diverse artists based upon ethnicity, style, experience, and geographic location, we collaborated with major international artists of the Post Modern Era: Kenneth Noland, Jules Olitski, Barbara Chase-Riboud, Betye Saar, Richard Hunt, Benny Andrews, Jacob Landau, Romas Viesulas, Al Loving and Belkis Ayón while recognizing the extraordinary talents of young artists such as Maya Freelon Asante, Jose Ortiz-Pagan, Danny Alvarez, Gustavo Garcia, Pablo Alorcan and Pamela Phatsimo Sunstrum.

Visiting artists are selected by a Review Committee, which may include curators, art historians, or former visiting artists as funds are available. The staff is assisted by a National Advisory when they are organizing special projects for grant applications that connect residencies with a special theme or planned exhibition. Philadelphia-based fine artists also have two current options available only to them: they may apply annually in the spring to the Libby Newman Fellowship Fund or to the Joyce de Guatemala Fund. Information on these residencies is provided at **www.brandywineworkshopandarchives.org**

Glass Lobby Gallery

Barbara Duval

Ingwer IV
Lithograph, 1989
30" x 21"
\$600

Frank Galuszka

Flowers
Lithograph, 1994
22" x 30"
\$800

Shigeko Kumabe

A Letter
Lithograph, 1997
30" x 21.5"
\$500

Leo Limon

L.A. Greenhouse Premiere
Lithograph, 1990
22" x 30"
\$600

Peter Paone

Sweet Sisters
Lithograph, 2012
23.75" x 17.5"
\$600

Eduardo Roca

Hands/Head
Lithograph, 1999
29.5" x 19.5"
\$750

Norie Sato

Out of Chaos
Lithograph, 1991
21.5" x 30"
\$650

Fred Wessel

Aquarium Renaissance
Lithograph, 1984
22.25" x 30"
\$800

Fred Wessel

Aquarium Steelhead
Lithograph, 1985
21.5" x 30"
\$800

Isaiah Zagar

Isaiah
Lithograph, 1986
30" x 22"
\$800



1st floor Temporary Gallery

Pablo Alorcan

Junior
Relief Print, 2017
24" x 36"
\$600 (unframed)

James Dupree

Triangular Weeze
Lithograph, Silk Screen, 1989
60" x 42" (4 panels)
\$3,500

Vincent Falsetta

Untitled (401-83)
Silk Screen, 1983
30" x 22"
\$650

Gustavo Garcia

Untitled
Relief Print, 2017
23" x 23"
\$600 (unframed)

Simon Gouverneur

Untitled
Lithograph, 1989
22" x 21.75"
\$500

Sedrick Huckaby

99% Project (Various
Images from a suite of 101)
Lithograph, 2013
Prices Vary

Frank Hyder

Frontiers B
Lithograph, 2016
23" x 23"
\$600 (unframed)



Edgar Heap of Birds

Telling Many Magpies, Telling
Black, Telling Hachivi
Silk Screen, 1989
70" x 45"
\$3,000 (unframed)

Samella Lewis

Boy on Bench
Lithograph, 2005
27.5" x 20.3"
\$3,500

Jose Ortiz-Pagan

Nolando Bojito I
Lithograph, 2017
23" x 23"
\$600

Peter Paone

Adam & Eve
Lithograph, 2011
30" x 22"
\$1,200

Michael Platt

Five Canoes
Lithograph, Digital Pigment, 2012
28" x 22"
\$1,000

Vuyile Voyiya

Blissful Swing I
Linoleum Prints, 2007
30" x 44"
\$1,200

Vuyile Voyiya

Blissful Swing II
Linoleum Prints, 2007
30" x 44"
\$1,200

Vuyile Voyiya

Blissful Swing IV
Linoleum Prints, 2007
30" x 44"
\$1,200

Larry Walker

Veiled Wall Spirits
Lithograph, 2009
21" x 28.5"
\$800

Richard Whitman

Do Indians Go To Santa Fe When
They Die
Lithograph, 1988
21.5" x 22"
\$500

John Wilson

Four Men
Lithograph, 2004
30" x 22"
NFS



Printed Image Gallery

Henry Bermudez

Rain Over the Forest

Lithograph, 2017

30" x 42" (2 panels)

\$1,300

John Biggers

Family Ark (color)

Lithograph, 1992

29.5" x 21.5"

\$4,000

Camille Billops

Kaoshung Series #9

Lithograph, 2012

21" x 15"

NFS

Moe Brooker

And Then You Wonder

Lithograph, 2003

24" x 18"

\$2,500

Joyce DeGuatemala

Beyond the Year 2000

Lithograph, Silk Screen, Collage 1993

21.5" x 30"

\$1,200

John Dowell

2B+C/Tomorrow

Lithograph, 1983

30" x 22"

\$3,000

John Dowell

Healing

Lithograph, 1999

17" x 20"

\$2,000

Ed Hughes

Spring I

Lithograph, 2007

29" x 21.25"

\$750

Ed Hughes

Spring II

Lithograph, 2007

29" x 21.25"

\$750

Ed Hughes

Spring III

Lithograph, 2007

29" x 21.25"

\$750

Ed Hughes

Spring IV

Lithograph, 2007

29" x 21.25"

\$750

Richard Hunt

Untitled (Orange)

Silk Screen, 1980

22" x 30"

\$2,500

Paul Keene

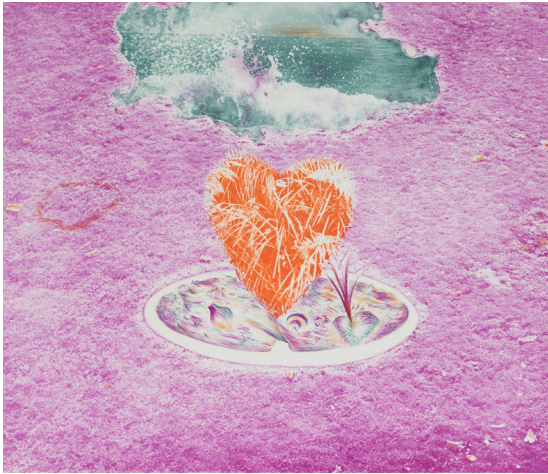
Generations

Lithograph, 1996

43" x 30"

\$3,500





Keith Morrison

Heat

Lithograph, 2011

37" x 25"

\$3,000

Doris Nogueira-Rogers

Lua de Vida

Lithograph, Screenprint, 2015

21.5" x 30"

\$800

Kenneth Noland

Brandywine

Lithograph, 1991

21.75" x 30"

NFS

Odili Donald Odita

Cut

Lithograph, 2016

29.5" x 21"

\$3,000 (unframed)

Jules Olitski

Wooka

Lithograph, 1989

22" x 30"

\$4,500 (unframed)

Howardena Pindell

Autobiography Past + Present

Lithograph, 2005

21.5" x 60"

\$3,000 (unframed)

Howardena Pindell

Autobiography Past + Present II

Lithograph, 2005

21.5" x 60"

\$3,000 (unframed)

Marta Sanchez

La Calle Sequin Struck by Environmental Debris

Relief, Screenprint, Watercolor, 2017

24" x 36"

John T. Scott

Blues for the Middle Passage II

Lithograph, 1988

30.25" x 20"

\$3,500

Janet Taylor-Pickett

Hagar's Dress

Lithograph, 2007

50" x 38"

\$2,500 (unframed)

Shelly Thorstensen

Smoke and Mirrors II

Lithograph, 2007

58" x 41.5"

\$4,000

William T. Williams

Time of Song

Lithograph, 2005

22.25" x 15.75"

\$2,500